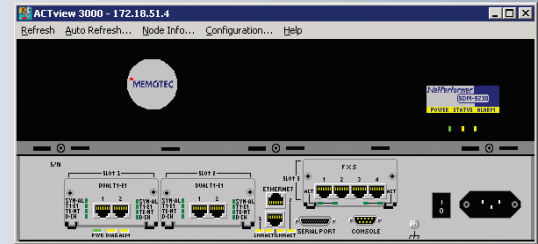




# ACTView 3000

## NetPerformer Network Management Software

- Maximizes ROI with seamless integration to HP OpenView management systems
- Converges monitoring and configuration of voice and data services into a single, integrated network management solution.
- Provides a detailed network view via a user-friendly Graphical User Interface (GUI)
- Simplifies software upgrades through scheduled and on-demand download/upload capabilities



AS MULTIMEDIA BECOMES MORE PREVALENT AND NETWORKING BECOMES MORE COMPLEX, ENTERPRISES ARE CHALLENGED TO CONVERGE THEIR NETWORK MANAGEMENT CAPABILITIES INTO A UNIFIED, EFFICIENT SOLUTION. WHILE HP OPENVIEW CONTINUES TO BE THE INDUSTRY'S DEFACTO SOLUTION FOR GENERAL NETWORK-WIDE MONITORING, ENTERPRISES ARE QUICKLY REALIZING THAT A MORE COMPREHENSIVE, GRANULAR VIEW OF INDIVIDUAL SERVICES RUNNING THROUGHOUT THEIR NETWORKS IS NECESSARY IN ORDER TO GUARANTEE QUALITY OF SERVICE METRICS AND TO REMAIN COST-EFFECTIVE.

ACTView 3000 is a software module that simplifies the management of NetPerformer multi-service networks. It is fully compatible with HP OpenView, which is also capable of interfacing with any SNMP-based device. ACTView 3000 drives efficiency and streamlines network management via a user-friendly, GUI, intuitive interface and comprehensive tools to monitor data and voice traffic, configure nodes and expansion cards, perform network-wide software upgrades, and evaluate performance metrics with detailed maps, call records and management reports.

### Customizable data collection, real-time alarm notification and system scalability

Networks are inherently dynamic - constantly evolving to address new service and performance requirements. ACTView 3000 easily adapts to these changes, providing network managers with the flexibility and scalability to easily accommodate advances in their unique configurations.

ACTView 3000 offers a consolidated, user-friendly environment to monitor and configure multi-service NetPerformer networks. Customizable views and reports, scheduled or on-demand software upgrades, and real-time alarm notifications ensures network managers have the right information at the right time to ensure optimized network performance.

- Seamless integration with HP OpenView
- User-configurable graphic display to tailor views and reports to address exact requirements.
- Point-and-click GUI and copy function makes it easy to configure and monitor any port, slot, device or expansion card in the network.
- Collects critical node statistics (such as thresholds and baseline performance) and call accounting information (such as source, destination, date, time and duration) either automatically, on-schedule, or on-demand. Data is securely maintained in permission-based log files that can be easily exported into many different formats for use with call accounting and billing applications.
- Support traps and alarms to announce potential network issues on NetPerformer units for proactive maintenance.
- Scalability and flexibility ensures that ACTView 3000 will easily grow in tandem with your network.

Memotec's ACTView 3000 is a powerful SNMP-based network management tool that consolidates device configuration and management into a single environment, eliminating redundancies in network management and the costs associated with maintaining and operating multiple NMS platforms.

# ACTView 3000

NetPerformer Network Management Software

## SYSTEM REQUIREMENTS

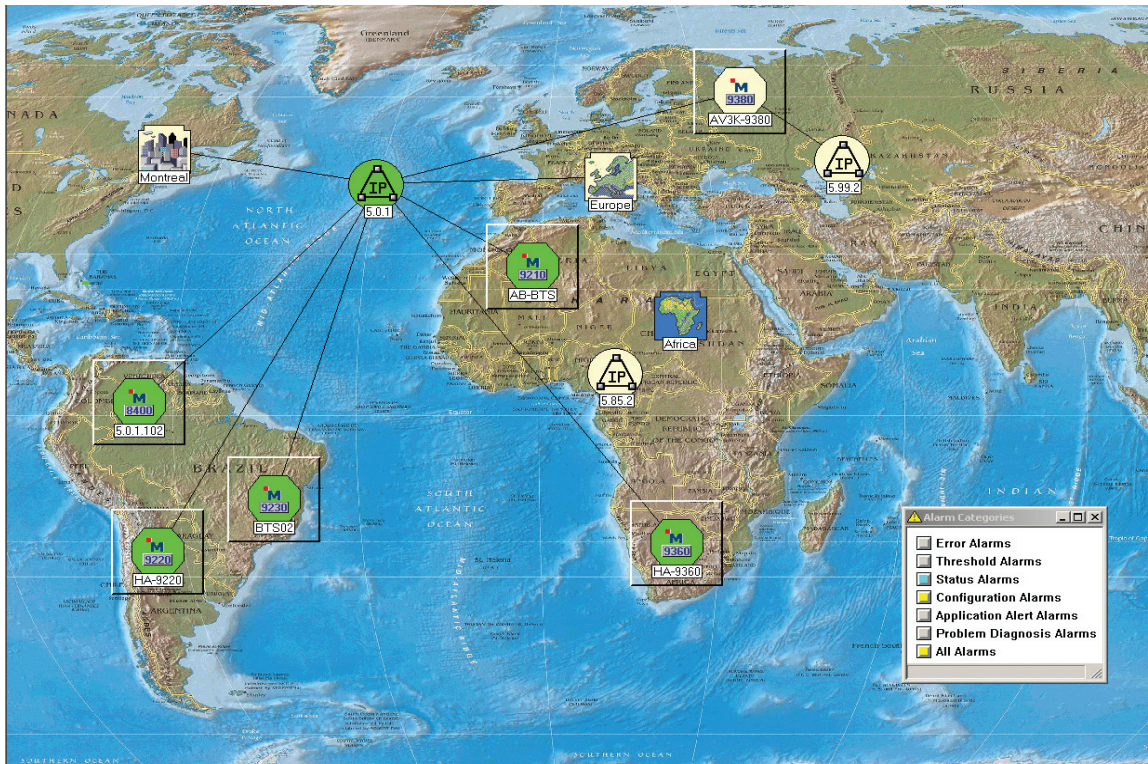
- OS Environment
- Windows NT/2000, XP or 2003 systems
- HP OpenView Network Node Manager version 7.5 or higher for Windows
- To find an HP OpenView sales office or reseller near you, visit <http://www.openview.hp.com/buy>

## HARDWARE

- Windows 2000, XP and 2003 systems
- Intel® Pentium processor, 333 MHz or greater
- Microsoft® Windows: Server 2000, XP Professional, Server 2003, or Server 2003 R2
- TCP/IP networking installed and configured
- RAM: 1 GB
- 800x600 monitor with SVGA graphics card
- Free disk space: 400 MB plus 512 MB free paging file space
- Ethernet connection

## SOFTWARE

- ACTView 3000 for HP OpenView Network Node Manager for Windows



ACTView is designed to manage the entire line of NetPerformer multi-service convergence solutions, with tools that help you monitor telephony and data traffic, configure nodes and expansion cards, upgrade software, configure systems, view maps, call detail records and management reports, and monitor the health of your overall network.

**MEMOTEC**  
redefining network efficiency

A SUBSIDIARY OF COMTECH EF DATA

[communications@memotec.com](mailto:communications@memotec.com)

7755 Henri Bourassa Blvd. West, Montreal, Quebec  
Canada H4S 1P7

[www.memotec.com](http://www.memotec.com)

[www.memotec.mobi](http://www.memotec.mobi)